



SXKH | **INDIA**

DIE SPOTTING PRESS



- ✓ No more dangerous mold handling by means of cranes, forklift trucks or lifting equipment.
- ✓ No more spotting on injection molding machines, which are cost-intensive and difficult to access.
- ✓ Optimal accessibility and ergonomics by means of swiveling and tilting plates.
- ✓ Considerable reduction of correction grinding through reproducibility
- ✓ Trial of hydraulic slides, auxiliary cylinders and ejectors

■ HMG-70JM ~ HMG-400JM

	HMG-70JM 1008	HMG-120JM 1411	HMG-160JM 1613	HMG-200JM 1814	HMG-280JM 2016	HMG-320JM 2218	HMG-350JM 2520	HMG-400JM 3020
Max. Clamping Force (T)	70	120	160	200	280	320	350	400
Max. Opening Force (T)	22	26	40	46	50	56	70	100
Max. Load Capacity on Upper Platen (T)	2.5	4	8	10	15	20	26	26
Max. Load Capacity on Lower Platen (T)	4	8	16	20	25	36	42	50
Platen Dimension (mm)	1000x 800	1400x1100	1600x1300	1800x1400	2000x1600	2200x1800	2500x2000	3000x2000
Distance Between Pillars (mm)	1210	1665	1880	2080	2280	2590	2890	3370
Max. Daylight (mm)	1100	1470	1660	1800	1950	2230	2440	2440
Min. Daylight (mm)	110	170	160	200	170	130	340	340
Overturn Degree for Upper Platen(°)	180	180	180	180	180	180	180	180
Max. Ejector Force (T)	3	3	7	7	10	10	10	10
Stroke for ejector testing (mm)	220	220	250	250	250	250	250	220
Machine Dimension (mm)	4200 x 1700 x 3800	5400 x 2200 x 4750	5600x2550 x5360	5650 x 2560 x 5800	6600 x 3075 x 5550	7400 x 3400 x 6900	8100x3600 x7300	8100x4200 x7600
Total Weight (T)	10	20	27	28	41	53	69	82

■ HMG-500JM ~ HMG-1000JM

		HMG-500JM 3020	HMG-500JM 3121	HMG-600JM 3525	HMG-600JM 4025	HMG-600JM 4030	HMG-800JM 4235	HMG-1000JM 5042
Max. Clamping Force	KN	500	500	500/600	600	600	800	1000
Max. Opening Force	KN	150	150	160	160	160	210	240
Max. Load Capacity on Upper Platen	T	30	30	32	40	50	80	110
Max. Load Capacity on Lower Platen	T	60	60	70	80	90	160	210
Platen Dimension	mm	3000x2000	3100x2100	3500x2500	4000x2500	4000x3000	4200x3500	5000x4200
Distance Between Pillars	mm	3370	3470	3900	4400	4400	4600	5400
Max. Daylight	mm	2700	2950	3200	3200	3700	4100	4500
Min. Daylight	mm	350	360	400	400	400	400	450
Overturn Degree for Upper Platen	°	180	180	180	180	180	180	180
Max. Ejector Force	T	12	12	12	12	12	20	20
Stroke for ejector testing	mm/KN	300	300	300	300	300	300	300
Machine Dimension	mm	8100x4200 x8100	8500x4450 x8600	9900x4900 x9400	10200x4900 x9600	11600x5400 x10400	13000x5450 x10900	15305x7000 x12500
Total Weight	T	88	113	140	170	180	235	320

TRIMMING PRESS



- ✓ Siemens S7 series visual intelligent PLC control system.
- ✓ The interface with the automation unit allows connection to third-party equipment via IO signals or PROFINET/S7, enabling seamless interaction.
- ✓ Adopt Servo hydraulic system, with the advantage of energy saving and high efficiency.



MODEL	Unit	TMM-30	TMM-50	TMM-80	TMM-100	TMM-160	TMM-200
Clamping Force	(KN)	300	500	800	1000	1600	2000
Internal Table Size	(mm)	800*560	1000*600	1200*800	1400*1100	1600*1300	1800*1500
Max. Daylight	(mm)	500	700	1000	1200	1400	1800
Max. Daylight	(mm)	300	500	800	1000	1200	1400
Max. Clamping Speed	(Mm/s)	140	140	140	140	140	140
Max. Return Speed	(Mm/s)	120	120	120	120	120	120
Machine Power	(Kw)	9	11	18.5	18.5	22	30

EDM MACHINE

Mirror surface without leaving marks



- Remote Assistance Function - One-touch calling for instant support
- Easy Operation - Just input four basic parameters to start machining
- High Gloss Mirror Circuit - Achieve an ultra-smooth 0.01 Ra surface finish
- Max Machining Speed: 750 mm³/min - Faster production, higher efficiency
- Industrial Linux OS - Stable, secure, and free from copyright restrictions
- Large 64GB Memory & 19" Capacitive Display - Enhanced storage and control
- Power-Off Memory Protection - Resume machining without data loss
- Supports 5-Axis Linkage & Multi-Machine Networking for seamless automation
- ERP Management & ATC Robot Support - Smart integration for streamlined operations



CNC WIRE CUT EDM

Items	Unit	BH-320	BH-400	BH-500	BH-630
Working Table Size	mm	760*520	850*600	1000*750	1170*830
Travel of Working Table	mm	400*320	500*400	630*500	800*630
Cutting Accuracy	mm	Straight line 0.005 octagonal 0.01			

CNC EDM DRILL

Items	Unit	CNC4030	CNC5040
Working Table Size	mm	400*600	440*630
Travel of Working Table	mm	300*400	400*500
Electrode Diameter	mm	φ.2-φ3.0	



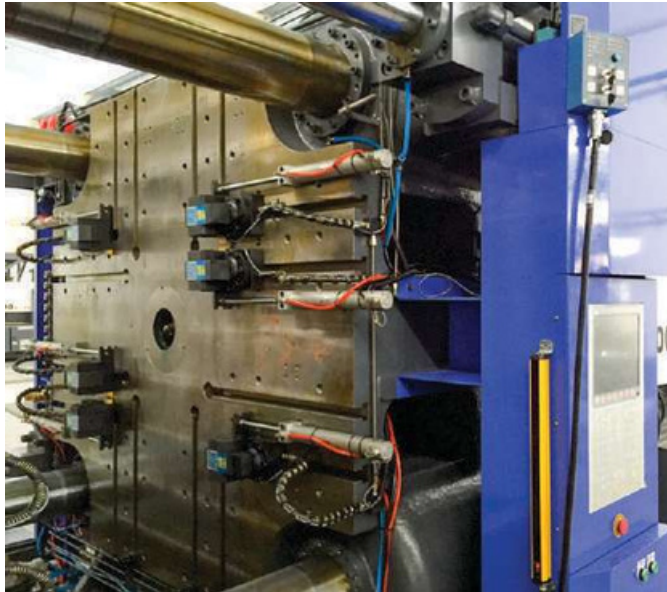
SUPER DRILL EDM



TECHNICAL PARAMETERS				
ITEM		UNIT	BH4030	BH5040
Worktable Size (LxW)		mm	400x600	440x630
Worktable Stroke		mm	300x400	400x500
Coordinate Axes Travel	Z Axis	mm	400	400
	W Axis	mm	350	350
Max. Distance From Guider To Worktable		mm	85-435	235-585
Max. Machining Current		A	30	30
Electrode Diameter		mm	φ0.3--φ3.0	φ0.3--φ3.0
Max. Capacity Of Workable		kg	200	300
Working Liquid			Water	Water
Power Supply			380V/50HZ	380V/50HZ
Total Input Power		kw	3.5	3.5
Machine Dimension (LxWxH)		mm	1060x1050x1950	1250x1150x2100
Machine Weight		kg	650	750
Digital Display			Two Axis digital (Optional: Three Axes Digital)	
Digital Display			Yes (Optional)	

HYDRAULIC QUICK DIE CHANGE SYSTEM

“Hydraulic Quick Die/Mould Clamping System”, helping industries to save time and enhance productivity by making the process of changing moulds/dies fast, effortless and safe , at the click of a button.



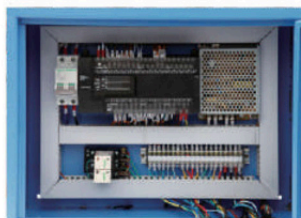
FEATURES

- Air Cylinder from SMC Germany.
- Patented Self Lock System
- Air Driven Hydraulic Pump from USA
- OMRON PLC for Electrical System Controller
- Mould remain clamped even after the power cut-off
- M/C will stop in case of operational error
- Applicable to machine platen with T Slot or Threaded Holes

Advantages of Hydraulic Clamping

- Remote Clamp Operation
- Reduced Operator Fatigue
- Increased Machine-Tool Capacity
- Safe working environment

S.no	Hydraulic Clamp	Conventional Clamp
1	Take less time to Clamp	Take More time to clamp
2	Ensure proper balanced clamping	May give lose and uneven clamping
3	Safety is ensured	Not safe for unskilled person
4	Operate from a safe distance	Need to fix with bare hands
5	Controlled calculated clamping force	Uncontrolled clamping force



Electro Permanent Magnetic Chucks for Milling Machines



MODEL	Model Dimension (mm)			
	A	B	C	E(D)
CNC205	150	415	75	52 X 52
CNC404	350	350	75	52 X 52
CNC406	400	600	75	70 X 70
CNC505	450	450	75	70 X 70
CNC510	500	1000	75	70 X 70
CNC608	600	800	75	70 X 70
CNC610	600	1000	75	70 X 70
CNC812	800	1200	75	70 X 70
CNC1014	1000	1400	75	70 X 70
CNC1016	1000	1600	75	70 X 70
CNC1218	1200	1800	75	70 X 70

Variety of standard sizes and any customized size of Magnetic Beds for VMCs and CNC Machining centres for quick and accurate clamping of work-pieces to be machined.

Magnetic Quick Die Change Clamps

Specification

Injection Machine (T)	50-4400
Magnetic Force/single Pole (T)	0.4
Dimension for one Pole (mm)	85
Maximum temperature°	120
Flux penetration (mm)	15-20
Voltage (v)	380V/440V, 60 Hz
Thickness of Platen (mm)	47
Ejector Hole	Standard
Locating Ring	Standard
Controller	Touch Screen
Temperature Sensor	1 Set
Proximity Sensor	1 Set
Pole Seal	Resin Plane



Almost maintenance free, Magnetic Quick Mould Changing systems is the most advanced and efficient way of Quick Mould change at the click of a button. The magnetic Plates are added on the Platens of Injection moulding machine resulting in much shorter mould change time, saving machine downtime, manpower and making the mould change process much safer.



Deep Hole Drilling Machine

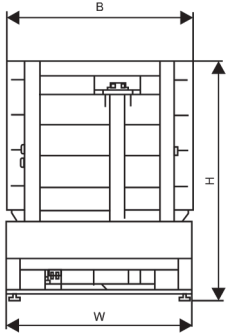
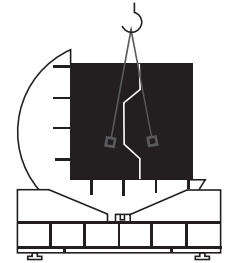
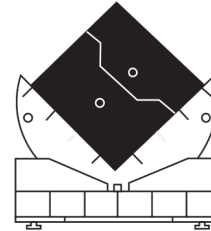
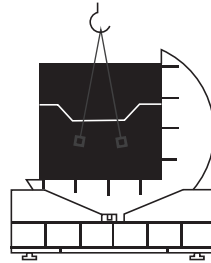
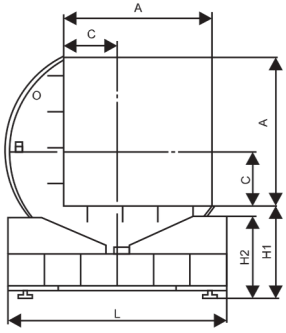
A range of multi-axis Deep Hole Drilling, Milling and Threading machine to fulfil all your needs to make cooling and airlines in Dies and moulds and other applications, having high depth to diameter ratios.

Deep Hole Drilling Tools

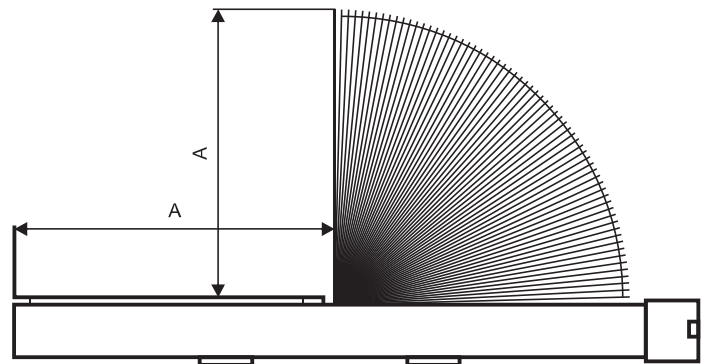
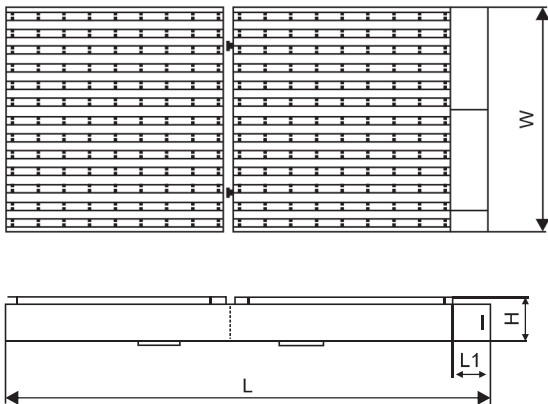
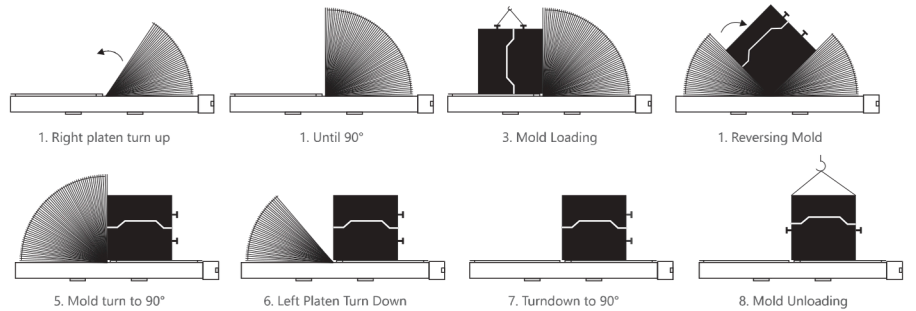
If you are searching for high performing deep hole drilling tools then you are at the right place. SXKH offers a wide range of gun drill tools that are popular for high precision performance and assures that all the chips extracted by the drill head are exhausted through the V-shaped chip flute of the gun drill shank. These tools are highly precise, fast and produce excellent surface finish



DIE/MOULD FLIPPER



MODEL	FMG -5T	FMG -10T	FMG -15T	FMG -20T	FMG -30T	FMG -50T
Overturn Capacity (KN)	50	100	150	200	300	500
Table Height H1 (mm)	580	680	780	930	950	1070
Table Size AxB (mm)	1200 x 1200	1400 x 1400	1700 x 1700	2000 x 2000	2000 x 2000	2500 x 2500
Motor Power (Kw)	1.5 KW	3KW	4KW	5.5KW	11KW	18.5 KW
Center Size C (mm)	450	500	640	750	750	900
Max Machine Size L x W x H (mm)	2130 x 1200 x 1780	2270 x 1400 x 2080	2620 x 1700 x 2480	3060 x 3000 x 2930	3150 x 2000 x 2950	4000 x 2500 x 3570
Weight of Machine (KG)	1600	2800	4000	6300	8300	16000



MODEL	PFM-5T	PFM-10T	PFM-15T	PFM-20T	PFM-30T	PFM-50T
Table Size A*W (mm)	1100x1250	1300x1400	1500x1650	1600x2000	1800x2200	2600x3000
Max. Overturn Capacity (KN)	50	100	150	200	300	500
L (mm)	2800	3100	3600	3800	4200	6000
L1(mm)	400	400	500	500	500	700
H (mm)	350	450	450	530	530	630
Power (kW)	3	4	5.5	11	18	22
Machine Weight (KG)	4000	4500	5000	8000	11000	14000



B-152, Mayapuri Industrial Area, Phase-1, New Delhi, 110064, India
T: 011 43738825 M: +91 98102 99598